

This website stores cookies on your computer. These cookies are used to collect information about how you interact with our website . We use this information in order to improve and customize your browsing experience and for analytics and metrics about our visitors both on this website and other media. To find out more about the cookies we use, see our Privacy Policy.

If you decline, your information won't be tracked when you visit this website. A single cookie will be used in your browser to remember your preference not to be tracked.

Accept

Decline

## LATEST FIGURES ON CORONAVIRUS

[Click Here](#)

## LATEST ADVICE

- Cargo distribution opening hours on Saturday March 28 +
- Stay home to saves lives +
- 6 feet to save lives +
- Self-isolate if you travelled or have symptoms +
- Take care of yourself and others. +
- Restrict travel to the Sister Islands. +
- For All Questions +

## POLICIES IN ACTION

- Extended curfew transitions at 5 am Saturday, 28 March +
- Non-essential Government operations closed, certain businesses closed +
- Restaurants restricted to take-out or delivery +
- Businesses that remain open must provide for social distancing (minimum 6 ft) +
- Public transport suspended, taxis limited to 2 passengers +
- No sports group gatherings +
- Airports closed to international passengers, travel to the Sister Islands restricted, cruise ships and private yachts banned +

## WE WORK WITH



### EXTENDED

## ◀ CURFEW TRANSITIONS ▶

At 5am Sat, 28 March, the transition to a new soft daytime curfew will begin continuing until 7 pm. From 7am - 5am

## WHAT IS CORONAVIRUS (COVID-19)?

Coronavirus or COVID-19 is a new strain of the coronavirus, which was first identified in Wuhan City, China in 2019. COVID-19 is a member of the coronavirus family (a group of viruses) that has never been encountered before.

## WHAT ARE THE SYMPTOMS?

The virus most commonly causes:

- ✓ coughing
- ✓ fever
- ✓ tiredness
- ✓ breathing difficulties

These symptoms are usually mild and begin gradually but commonly occur within 1-10 days after a person has been exposed.

Some people become infected but don't develop any symptoms and don't feel unwell. Around 1 out of every 6 people who gets COVID-19 becomes seriously ill and develops difficulty breathing.

## HOW DO I GET MORE INFORMATION?

This official website includes a lot of helpful information that is constantly being updated, including answers to [Frequently Asked Questions](#) and details of [Policies in Action](#). We also have a list of [Hotlines](#) for critical services.

If you have medical questions, many resources are available on this website and [www.hsa.ky/coronavirus](http://www.hsa.ky/coronavirus). If you can't find what you're looking for or have a question about your specific situation, contact your General Practitioner or the 24-hour Flu Hotline on 1-800-534-8600 or 947-3077 or email [flu@hsa.ky](mailto:flu@hsa.ky). If you have a medical emergency dial 911.

If you have a non-medical question and can't find the answer on this website, contact the National Emergency Operations Centre hotline on 1-800-534-6555 or email [NEOC@gov.ky](mailto:NEOC@gov.ky).

## REGIONAL TRACKER

Get updates from the Pan American Health Organization [here](#).

## WHO SITUATION REPORTS

► HOUSEHOLD GUIDANCE

## HOUSEHOLD GUIDANCE



Stay at home guidance for households with possible coronavirus (COVID-19) infection [Read more](#).

► VULNERABLE PEOPLE

## VULNERABLE PEOPLE & THEIR FAMILIES



Information for vulnerable people such as older persons or chronic conditions that place them at high risk and their carers. [Read more](#).

► BUSINESS GUIDANCE

## BUSINESS GUIDANCE



Information on the novel coronavirus (COVID-19) including guidance for businesses. [Read more.](#)

### ► EDUCATION GUIDANCE

## EDUCATION GUIDANCE

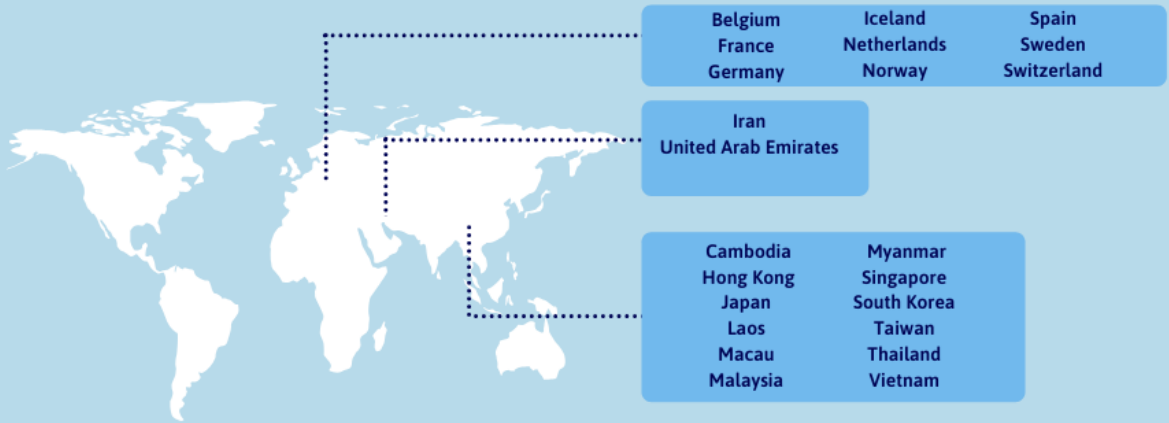


Information for schools and other educational settings in providing advice about the novel coronavirus (COVID-19). [Read more.](#)

### ► TRAVEL ADVICE

## COVID-19 Countries on Watch

If you have returned from the below countries within the last 14 days, please contact the Public Health Department immediately if you have a cough, fever or shortness of breath on 244-2621 / 244-2561



People should avoid all but essential travel to countries where there appears to be extensive in country transmission of COVID-19  
Please note, this list is subject to change as further updates are received  
HSA.ky/Coronavirus



MINISTRY OF  
HEALTH, ESSENTIAL SERVICES,  
CULTURE & HUMAN SERVICES



PUBLIC HEALTH DEPARTMENT  
CAYMAN ISLANDS  
Keeping People Healthy, Keeping the Islands Safe

Travel advice and restrictions from the Cayman Islands Government. [Read more.](#)

### ► MENTAL WELLBEING

## MENTAL WELLBEING



Information on maintaining your mental wellbeing and safety in the unlikely event of needing to self-isolate. [Read more.](#)

### ► LATEST NEWS

## LATEST NEWS



Information for the public on the worldwide outbreak of coronavirus, including the current situation in the Cayman Islands and information about the virus and its symptoms. [Read more.](#)

### ► PUBLIC HEALTH INFO

**CATCH IT**

**WASH IT**

**TRASH IT**

**CORONAVIRUS**

Public health information about how coronavirus is spread and how to avoid catching or spreading germs [Read more.](#)

### ► RESOURCES

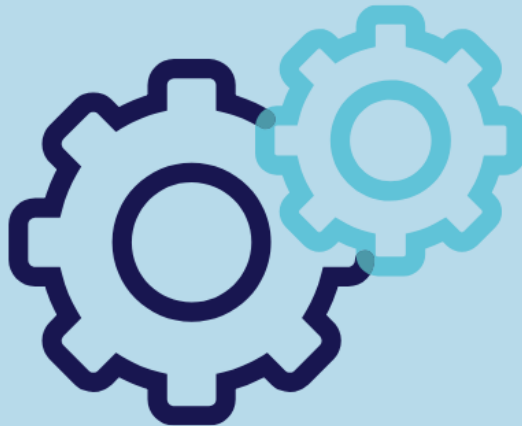
## RESOURCES



Download our on the novel coronavirus (COVID-19) information, graphics and videos [Read more.](#)

### ► FRONTLINE STAFF

## FRONTLINE STAFF



Information for front-line and essential workers on coronavirus in Cayman Islands and information on policies [Read more.](#)

### ► POLICIES IN ACTION

## POLICIES IN ACTION



Information the public on coronavirus policies in Cayman Islands [Read more.](#)

### ► HOTLINES

## HOTLINES



Information the hotlines and contact details for various information on coronavirus in Cayman Islands [Read more.](#)

## CORONAVIRUS

### F.A.Q.S

What is coronavirus? How is it caught & spread?

The information and studies we are receiving on COVID-19 grow by the day, and so does the understanding. The



advice from our Chief Medical Officer is that shared by national public health agencies such as the Centers for Disease Control in the USA, Public Health England and the World Health Organization. [Read more.](#)

#### What is Government doing to address COVID-19?

Here on our official website, you can find the most up to date news and information about Government's response to COVID-19. This includes [Policies in Action](#) to protect our community and save lives.

#### What should I do if I think I have COVID-19?

Unless you require emergency medical care, stay home. Call your General Practitioner or the Flu Hotline on 1 800 534 8600 or 947 3077 for advice if you are not managing. Depending on your symptoms and travel history you will most likely be advised to self-isolate at home. A member of the Health Services Authority will visit you at your home. [Read more.](#)

#### What should businesses do?

The Cayman Islands Government issued advice on how businesses and commerce can prepare ahead of a potential community case. We are also keeping this website updated to reflect the latest policies and advice. [Read more.](#)

[View all of our frequently asked questions on the novel coronavirus.](#)

## PREVENTION TIPS

The best way to protect yourself and others from the spread of this virus is to practice these three tips:

- ✔ Catch it. Catch a cough or sneeze in a tissue. If you have nothing to use, use your elbow and not your hands.
- ✔ Bin it. Bin the tissues after use. Viruses can live for hours in tissues.
- ✔ Kill it. By avoiding close contact with those suffering from acute respiratory illness, avoiding travel if you have flu-like symptoms (or a cough or a fever) we can help kill the virus.

# Coronavirus Prevention Tips

1



frequently **cleanse hands**  
with soap and water or an  
alcohol-based hand sanitizer

## CAYMAN PREPARED

Hazard Management Cayman Islands has overall responsibility for the national Comprehensive Disaster Management programme, including preparedness, response, mitigation and recovery.

HMCI is responsible for the National Emergency Operations Centre (NEOC), which is activated to direct and coordinate the response to national threats. [Read more.](#)

## PRESS ROOM

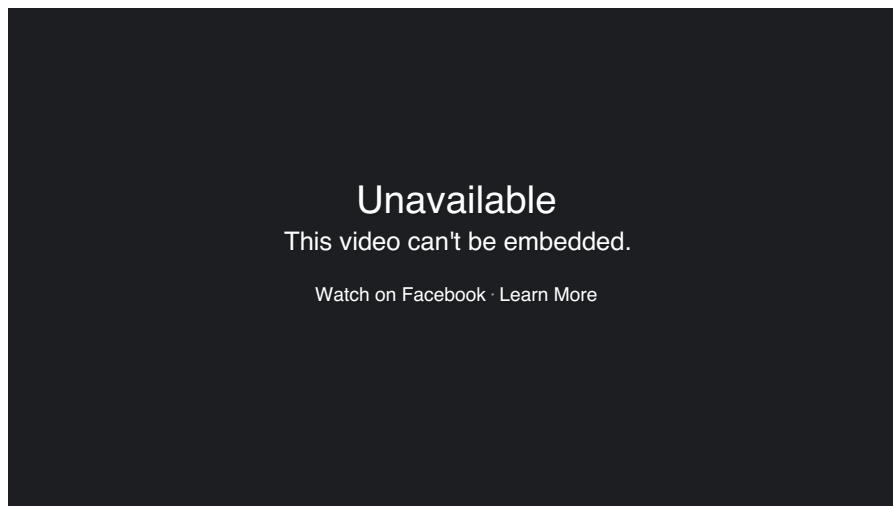
▶ Friday, 27 March Government Update: Two curfew Regimes Going Forward from March 28 until Friday, 3 April  
[Read more](#)

▶ March 27 - Changes Made to External Examinations Scheduled for This Year for Secondary-level Students [Read more.](#)

▶ Cayman Islands Public Library Service Announces an Online eBook Service [Read more.](#)

- ▶ Essential Services Continue During Coronavirus [Read more.](#)
- ▶ Thursday March 26 COVID-19 update. [Read more.](#)
- ▶ DEH Details Advice on Coronavirus for Food Handlers. [Read more.](#)
- ▶ Annual Fee Obligations Deferred for Corporate Entities till 30 June [Read more.](#)
- ▶ Donation to Students. [Read more.](#)
- ▶ Dept of Agriculture Updates Operational Hours, Suspends Certain Services, Closes Reception and Shelter [Read more.](#)
- ▶ Deadlines for Annual Returns and Economic Substance Notification Filings Extended. [Read more.](#)
- ▶ DCFS Publishes Additional Contact Details for Staff Working Remotely. [Read more.](#)
- ▶ Wednesday, 25 March Government Update. [Read more.](#)
- ▶ [Read all news](#)

## CORONAVIRUS LATEST LIVE UPDATES



CAYMAN ISLANDS HEALTH SERVICES AUTHORITY (HSA)

[Learn more](#)

USA CENTERS FOR DISEASE CONTROL & PROTECTION (CDC)

[Learn more](#)

PUBLIC HEALTH ENGLAND (PHE)

[Learn more](#)

WORLD HEALTH ORGANIZATION (WHO)

[Learn more](#)

CARIBBEAN PUBLIC HEALTH AGENCY (CARPHA)

[Learn more](#)













































































































































































































































GIVE US YOUR  
FEEDBACK

Cayman Islands Government, Government Admin Building, Grand Cayman, Cayman Islands, Tel:[345 949 7600](tel:345-949-7600)



# CAYMAN ISLANDS GOVERNMENT